



RESEARCH LIFECYCLE PROGRAMME

MANCHESTER 1824
The University of Manchester



WHAT IS RLP 1 AND WHAT HAS IT ACHIEVED SO FAR?

The Research Lifecycle Programme (RLP 1) is a multimillion-pound transformation programme that supports the University of Manchester's ambition to achieve a top 25 position in global research rankings. The programme has been running since 2018 and will conclude in 2023.

RLP 1 has the following high-level programme outcomes:

- Improved research capabilities to achieve the outcomes and impact set out in the 2020 Vision.
- Researchers will have capabilities to meet regulatory compliance.
- Improved capabilities will be brought together in a single dashboard.
- Enhanced capabilities for internal and statutory reporting.
- Capabilities to monitor and plan processes for proactive capacity management.
- The cost of delivering research-centric services is understood with improve cost recovery.

While the programme is still in progress, it has so far achieved and delivered the following:



Facilitate Research Networking & Collaboration

Making better use of existing University data sources to enable researchers to work collaboratively within Manchester and across wider partnerships.



Overleaf for Authoring Collaboration

Overleaf is designed to make the process of writing, editing and producing your research papers and project reports much quicker for both you and your collaborators.



Microsoft Teams Guest Access

Enabling external access to Teams to support researcher collaboration.



Research Data Management Outcomes

RDM Strategic Lead role & RDM Strategy established

Figshare research data repository and Pure integration

Ongoing pilot work for:

- Long-term digital preservation
- Open research platforms and software
- Data Stewardship role at UoM



Innovation Communities

Innovation Clubs help to build communities of practice around key digital research technologies and provide a forum for researchers to share their knowledge, experience and practical skills in these areas. Club activity aligns closely with Digital Futures theme communities.

eg. Mapping and GIS Club; Additive Manufacturing Club.



Databases for Research Service

A consistent way to manage and curate data, for now and the future.



High Compute Investments

- High Performance Compute (HPC);
- Cloud compute
- High throughput compute;
- GPU capability enabling machine learning and AI;
- Edge compute/satellite storage;
- Streamlined procurement of cloud compute.



Research IT Strategy

Defined a Research IT vision, mission, strategy and guiding principles to better inform key decisions.

RESEARCH LIFECYCLE PROGRAMME 1 WORKSTREAMS & PROGRESS



1 RESEARCH INFORMATION 50%

How researchers find and manage information. (The research information work continues.)



2 RESEARCH PROCESSES 17%

Enabling better research support at the University. (The research processes work continues.)



3 RESEARCH E-INFRASTRUCTURE 100%

Digitally-based technology and organisation structures needed to support internationally leading, collaborative research. (The E-infrastructure will be refreshed in RILP2.)



Highly Restricted Data Service

The Highly Restricted Data Service (HRDS) supports five systems (last four of which were delivered) that enable researchers to keep their data safe:

- Data Safe Haven (Cloud)
- Data Safe Haven (Local)
- Bespoke Web Application Stacks
- SafePod
- REDCap



SafePod - A Secure, Physical Space

The SafePod Network (SPN) is a major research innovation to provide and manage a network of standardised safe settings (SafePods) across the UK for data that requires secure access for research

UoM has joined the SPN and installed our own SafePod in the Main Library.



Survey Tools

Qualtrics Qualtrics is a survey tool which is suitable for capturing information from a range of stakeholders. It can be accessed through the IT Service catalogue.

REDCap
REDCap is a secure web platform for building and managing surveys and databases that feature highly restricted data.



Award Management Module in PURE

Provides a mechanism to process and manage research applications and awards for both academic and administrative staff via the Pure Awards Management Module.

Upgrade to the Pure Researcher Explorer portal.



Manchester Digital Collection Website

A new growing resource for exploring and manipulating high-quality images, audio and video of cultural collections and research projects at The University of Manchester and presenting our cultural assets to the world.



Competency Management Business Design and Tooling

This is identifying key knowledge, skills and behaviours for job clarity, recruitment and career pathway planning-introduced to 6 cohorts.



BlackDackel Costing Tool

BlackDackel is a costing tool rolled out to Research Services and Research Finance.



Research Risk Profiler

The Research Risk Profiler is a new tool to help researchers navigate a large range of potentially complex risk and compliance topics when planning a new project to ensure that it can proceed safely and securely.



Qualtrics Survey Tool

Qualtrics is a survey tool

6,613 Registered users of Qualtrics since the service began in November 2020 to October 2022

Registered users of Qualtrics since the service began in November 2020 to October 2022

799,677 Total number of responses to surveys

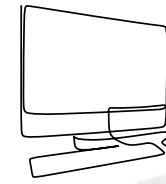
Total number of responses to surveys

Top three users of Qualtrics had the following responses:

47,924

18,373

17,949



High Performance Computing (HPC)

Total value of projects

being supported is **£35.30** million based on accessible data from 48 projects
3,673,223 CPU-hours (approx. 420 CPU-years) worth of compute has been run on the HPC Pool in the last 12 months

Total number of registered users of HPC Pool service is **128**

61 HPC Pool Registered Projects
78 people have run jobs on the HPC Pool, with **42** of whom have run jobs in the last **6** months

Figshare

Since May 2021, Figshare has

400 Active user profiles

684 Data resources deposited

18,217 Downloads

39,871 Views

The Top Three Schools by Uploads

School of Natural Sciences



School of Biological Sciences



School of Engineering



Edge Compute Service

An inventory of assets and demand model for edge compute, which aims to reduce waiting time to get equipment costed, providing better infrastructure support, more visibility of IT spend. The service is currently supporting **7** research projects.

Highly Restricted Data Service

The service offers **5** technological solutions (**4** delivered) that support researchers who work with highly restricted datasets. REDCap is running **17** projects serving **35** users. DSH Local is supporting over **27** projects across the University. And Web Application Stacks service is supporting **5** research projects which are receiving total grants of **£5,691,242** so far



Manchester Digital Collection (MDC)

Total Unique Visitors of MDC since October 2019

19,832

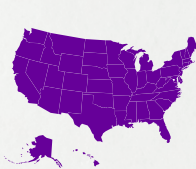
Number of Unique Visits of MDC by Geographical Location

8,422



UK

3,286



USA

874



China

580



Italy

476



Germany

6,194



Other



Overleaf

Key statistics from the first **17** months

On June 26, 2020 The University of Manchester launched Overleaf Commons, an online, collaborative LaTeX editor that provides a range of services and solutions, for the production of papers, thesis and books.

4,537 User Registration

2,597 New Projects/Papers

743 Collaborated Institutions